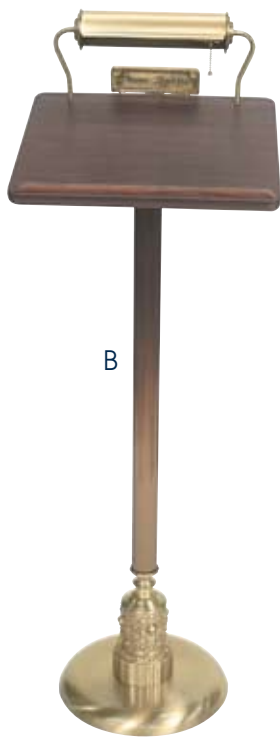




A. CRITERION REGISTER LECTERN
 Antique bronze reeded tube design and ornamental base. Tilted mar-resistant walnut top with reflector lamp and pull chain. 54"H. Includes "Please Register" sign.
120952



B. VIRTUOSO REGISTER LECTERN
 Matching 2" reeded column on 14" base with decorative bottom. Large writing surface with reflector lamp. Measures 42"H to front of writing surface; 54" H overall to top of light.
522902



C. REGISTER LECTERN
 Constructed of walnut veneer with metal reflector shade with concealed wiring. Brass finish. 22.5"W x 16"D writing surface; tapered post; 13.25" Sq. tiered base.
30481



D. PORTABLE PULPIT
 Massive-looking, yet lightweight. Large storage drawer is finished on the inside, and is removable to create a shelf for minister's books and notes. Concealed wire light fixture. Walnut finish. 17" x 22" writing surface. Overall height is 45". Has side pockets for cards. Comes with concealed wheels for portability (locking wheels available at an additional charge).
139947



E. PORTABLE REGISTER STAND
 Single post design with decorative round base. Antique bronze finish. Easily transportable with removable top and bottom. 53"H in back, 42.5"H in front. Reflector lamp with pull chain.
296961



F. PORTABLE REGISTER STAND
 Decorative double-pedestal style lectern with a square base and a swivel style reflector lamp. Easily transportable with removable top and bottom. Antique bronze finish. 51"H in back, 43"H in front.
500321



G. DELUXE PORTABLE LECTERN.
 Solid Oak. Hand-crafted of solid oak; lacquer-coated. Sliding friction-fit assembly mechanism for base and working surface; no tools required. Three pieces include support column, base and working surface. Working surface is 20"W x 15.75"D. 43.5"H.
572721



A. PORTABLE REGISTER/LECTERN
Anodized aluminum & formica. Frame and collapsing tripod legs are goldtone anodized aluminum; 18.5"W X 15.5"D working surface is walnut woodtone formica. 47"H.

- 26425** Stand with Case
- 26395** Stand Only
- 26409** Carrying Case Only



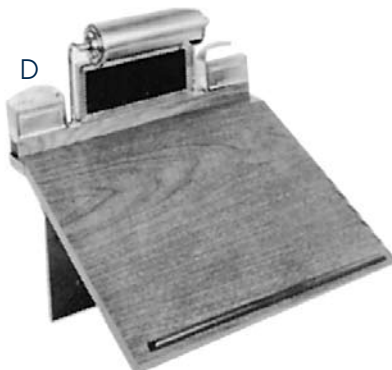
B. LIGHTWEIGHT PORTABLE STAND
Framework is anodized aluminum tubing in matte finish gold-tone color. Working surface is heavy-duty decorbond with a laminated wood grain finish; book rest is finished in bright brass-tone trim. The unit folds without undoing screws or latches. 44"H x 22"W x 16"D. 48" x 22" x 4" folded; 14 lbs. Heavy-duty canvas storage /carrying case with nylon web handles and Velcro® closures may be ordered as a set or separately.

- 507768** Portable Register Stand & Case
- 507776** Portable Register Stand Only
- 507784** Storage & Carrying Case Only



C. ECONOMY REGISTER/LECTERN
Hand-crafted solid oak; coated three times to ensure moisture-resistance and finish. 43"H; working surface is 20"W x 15.75"D.

534811



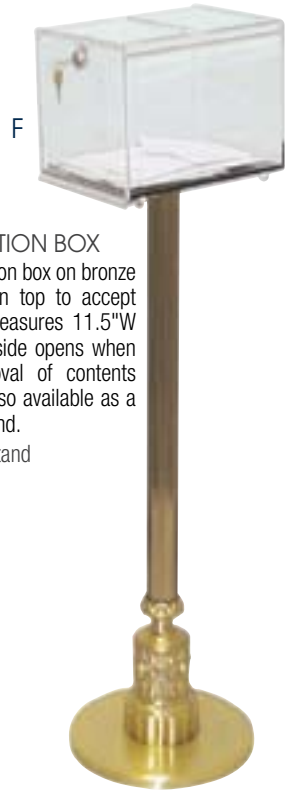
D. QUALITY WALL REGISTER DESK
Durable woodgrain formica writing surface measures 15" x 21". Available with optional brass-plated card pockets and/or brass-bound message board. Features brass-plated reflector with hidden wire. Writing board folds flat when not in use. Packed with toggle bolts ready to install. Maple fruitwood finish.

- 296589** Register Desk, With Card Pockets
- 296597** Register Desk, No Card Pockets
- 296546** Optional 8" x 4" Message Board Only



E. ECONOMY WALL REGISTER DESK
Simple styling enhanced with all wood-grain formica and bright brass reflector make the economy Register Desk look more expensive than it really is. The large 15" x 21" writing board folds flat when not in use. Packed with toggle bolts ready to install. Maple fruitwood finish.

296619



F. LUCITE CONTRIBUTION BOX
Lucite memorial contribution box on bronze stand has a wide slot on top to accept money envelopes. Box measures 11.5"W x 8.75"H x 9"D. Hinged side opens when unlocked for easy removal of contents. Lock and key included. Also available as a tabletop box without a stand.

- 500704** With Bronze Stand
- 500763** Tabletop



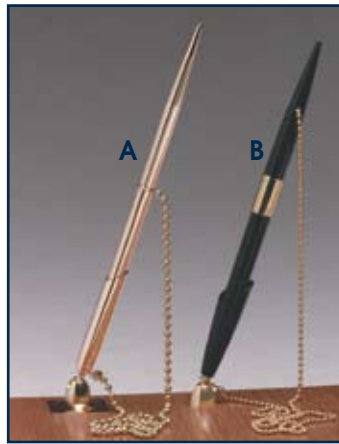
H. LUCITE TABLETOP CONTRIBUTION BOX
Lucite memorial contribution box has a wide slot on top to accept money envelopes. Bottom slides out when unlocked for easy removal of contents. Lock and key included. 12"W x 14"H x 3"D. Also available without a cross, specify when placing your order.

500755

PENS & HOLDERS

Gold plated receptacle holds either a deluxe black plastic pen or a polished gold finish pen with attached chain. Attaches to lectern with either pressure sensitive tape or screw mounting.

- A. 500416** Gold Finish Pen Set, Pressure Sensitive Mount
- 500474** Refill for Pen Set #500416
- B. 500569** Economy Black Plastic Pen Set with Screw Mount



C. CAST METAL CARD POCKET

Available in brass, bronze or chrome plating. Suction cups or screws for mounting. 3"H x 4.875"W x 1.5"D. Specify finish and mounting preference when placing order.
500585



D. CLIP-ON LIGHT

Anodized goldtone matte finish; spring clip-on attachment; includes one 25 watt frosted bulb. 6.5"L x 1.75" dia.
572713



G. POCKET CARD HOLDER
Plexiglass. Flat mounting. 3.5"H x 5"W x 1"D
296279

REGISTER ENSEMBLES

A grooved message board and plated swivel lamp with two card holders. The Complete Register Ensemble has a 3"H x 8.75"W message board and Lucite card pockets with an 18"L flat or angled mounting base, specify mounting choice when placing order. The Economy Register Ensemble has a 4"H x 8"W message board and cast metal card pockets with an 18"L flat mounting base. Specify bronze, brass or chrome plated lamp when placing order. Lettering sold separately.

- E. 139874** Complete Register Ensemble
- F. 296473** Economy Register Ensemble



H. LAMP & MESSAGE BOARD

A grooved 3"H x 8.75"W message board and bronze, brass or chrome plated swivel lamp. 18"L flat or angled mounting base, specify mounting choice and lamp finish when placing order. Lettering sold separately.
139882



I. MEMORIAL CARD HOLDER

Plexiglass. Flat mount. 3.5"H x 6"W x 3"D
500607



J. MASS CARD HOLDER

Plexiglass. Flat mount. 3.5"H x 5"W x 1"D
500593